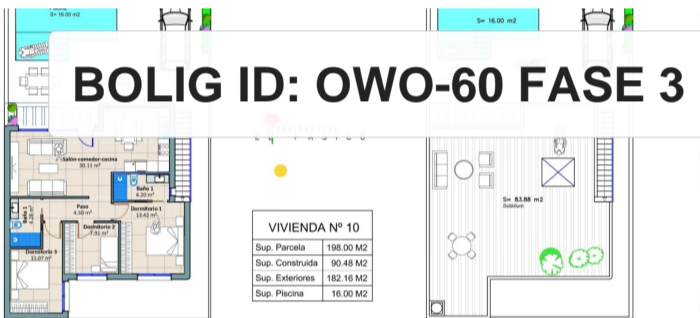


SUPERFICIES

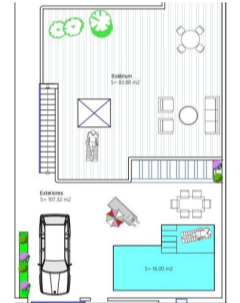
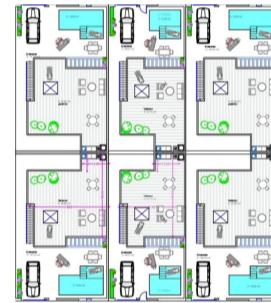
V.	CONSTRUIDA	EXTERIORES Y SOLARIUM	PARCELA
V-1	90.48 M2	98.28 + 83.88 = 182.16 M2	198.00 M2
V-2	73.62 M2	83.85 + 67.75 = 151.60 M2	162.00 M2
V-3	73.62 M2	83.85 + 67.75 = 151.60 M2	162.00 M2
V-4	73.62 M2	83.85 + 67.75 = 151.60 M2	162.00 M2
V-5	73.62 M2	83.85 + 67.75 = 151.60 M2	162.00 M2
V-6	73.62 M2	83.85 + 67.75 = 151.60 M2	162.00 M2
V-7	73.62 M2	83.85 + 67.75 = 151.60 M2	162.00 M2
V-8	73.62 M2	83.85 + 67.75 = 151.60 M2	162.00 M2



BOLIG ID: OWO-60 FASE 3



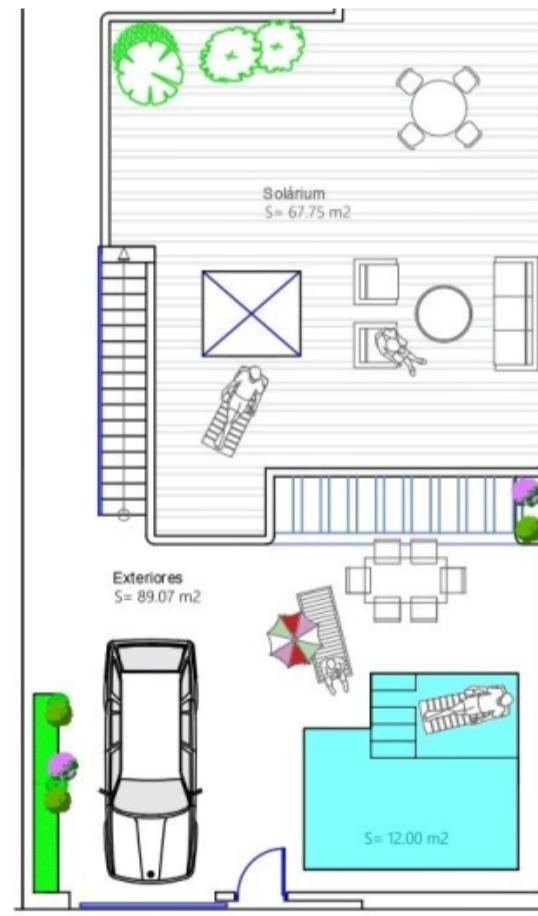
VIVIENDA Nº 10	
Sup. Parcela	198.00 M2
Sup. Construida	90.48 M2
Sup. Exteriores	182.16 M2
Sup. Piscina	16.00 M2



V.	CONSTRUIDA	EXTERIORES Y SOLARIUM	PARCELA
V-1	90.48 M2	98.28 + 83.88 = 182.16 M2	207.90 M2
V-2	90.48 M2	98.28 + 83.88 = 182.16 M2	207.90 M2
V-3	90.48 M2	98.28 + 83.88 = 182.16 M2	207.90 M2
V-4	90.48 M2	98.28 + 83.88 = 182.16 M2	207.90 M2
V-5	90.48 M2	98.28 + 83.88 = 182.16 M2	207.90 M2
V-6	90.48 M2	98.28 + 83.88 = 182.16 M2	207.90 M2
V-7	90.48 M2	98.28 + 83.88 = 182.16 M2	207.90 M2
V-8	90.48 M2	98.28 + 83.88 = 182.16 M2	207.90 M2



VIVIENDAS 57-58	
Sup. Parcela	168.30 M2
Sup. Construida	73.62 M2
Sup. Exteriores	89.07 M2
Sup. Piscina	12.00 M2



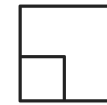
til salg i Torre-Pacheco

€324,900

. RESIDENCIAL EL PASICO FASE 3 - New build villa with 3 bedrooms in Torre-Pacheco, Costa Blanca, Spain.



90 m²



203



3



2



+34 609 97 72 62



www.bolig-udland.dk



info@bolig-udland.dk